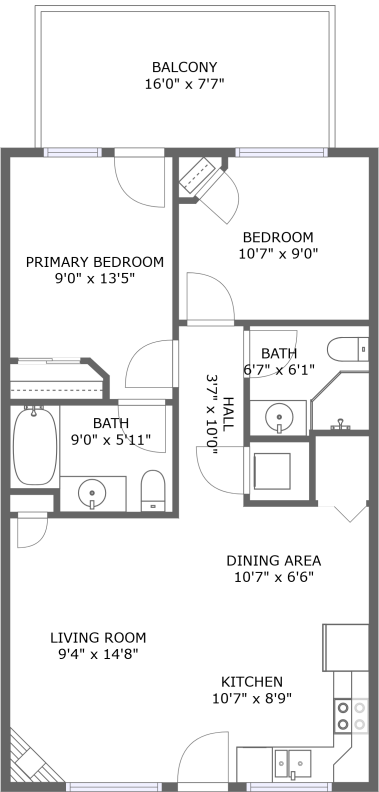


Home report

176 Filbey Court, Estes Park, Larimer County, Colorado, United States, 80517



FLOOR 1

Total Area: 691 sq. ft

Floor 1: 691 sq. ft

Excluded: Balcony 121 sq. ft, Walls: 0 sq. ft

Property summary

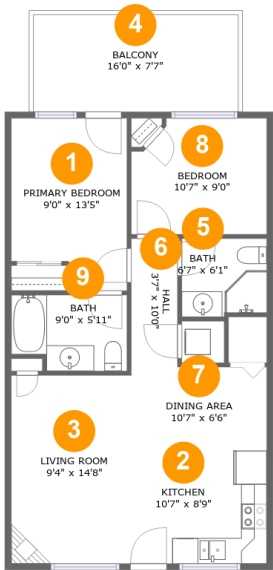
 **1** Floors

 **2** Bedrooms

 **2** Bathrooms

Home report

176 Filbey Court, Estes Park, Larimer County, Colorado, United States, 80517



Room dimensions

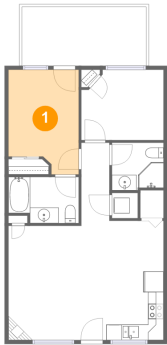
Floor 1

Total:691sqft

Excluded: 121sqft

#		Max Dimensions	sqft	Included
1	Primary Bedroom	9'0" x 13'5"	109 sq. ft	Yes
2	Kitchen	10'7" x 8'9"	93 sq. ft	Yes
3	Living Room	9'4" x 14'8"	137 sq. ft	Yes
4	Balcony	16'0" x 7'7"	121 sq. ft	No
5	Bath	6'7" x 6'1"	39 sq. ft	Yes
6	Hall	3'7" x 10'0"	36 sq. ft	Yes
7	Dining Area	10'7" x 6'6"	69 sq. ft	Yes
8	Bedroom	10'7" x 9'0"	90 sq. ft	Yes
9	Bath	9'0" x 5'11"	50 sq. ft	Yes

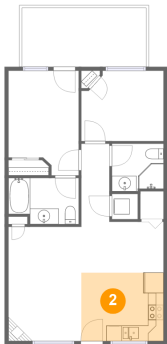
1 Floor 1 - Primary Bedroom



Max Dimensions: 9'0" x 13'5"
Calculated Area: 109 sq. ft
Included: Yes

Heated: Yes
Finished: Yes
Enclosed: Yes
Contiguous: Yes
Permitted: Yes
Wet space: No
Addition: No
Conversion: No

2 Floor 1 - Kitchen

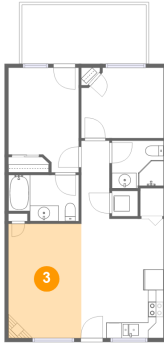


Max Dimensions: 10'7" x 8'9"
Calculated Area: 93 sq. ft
Included: Yes

Heated: Yes
Finished: Yes
Enclosed: Yes
Contiguous: Yes
Permitted: Yes
Wet space: No
Addition: No
Conversion: No

176 Filbey Court, Estes Park, Larimer County, Colorado, United States, 80517

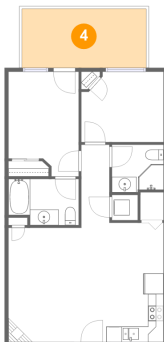
3 Floor 1 - Living Room



Max Dimensions: 9'4" x 14'8"
Calculated Area: 137 sq. ft
Included: Yes

Heated: Yes
Finished: Yes
Enclosed: Yes
Contiguous: Yes
Permitted: Yes
Wet space: No
Addition: No
Conversion: No

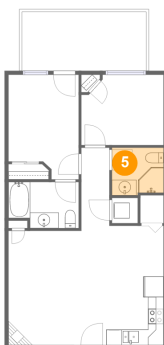
4 Floor 1 - Balcony



Max Dimensions: 16'0" x 7'7"
Calculated Area: 121 sq. ft
Included: No

Heated: No
Finished: Yes
Enclosed: No
Contiguous: Yes
Permitted: Yes
Wet space: No
Addition: No
Conversion: No

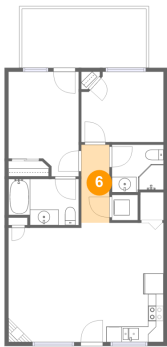
5 Floor 1 - Bath



Max Dimensions: 6'7" x 6'1"
Calculated Area: 39 sq. ft
Included: Yes

Heated: Yes
Finished: Yes
Enclosed: Yes
Contiguous: Yes
Permitted: Yes
Wet space: Yes
Addition: No
Conversion: No

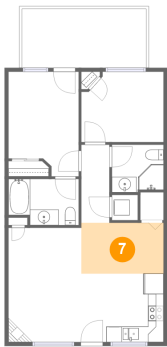
6 Floor 1 - Hall



Max Dimensions: 3'7" x 10'0"
Calculated Area: 36 sq. ft
Included: Yes

Heated: Yes
Finished: Yes
Enclosed: Yes
Contiguous: Yes
Permitted: Yes
Wet space: No
Addition: No
Conversion: No

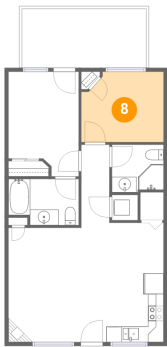
7 Floor 1 - Dining Area



Max Dimensions: 10'7" x 6'6"
Calculated Area: 69 sq. ft
Included: Yes

Heated: Yes
Finished: Yes
Enclosed: Yes
Contiguous: Yes
Permitted: Yes
Wet space: No
Addition: No
Conversion: No

8 Floor 1 - Bedroom

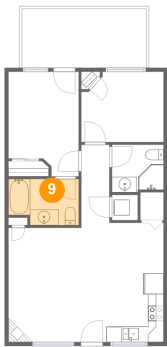


Max Dimensions: 10'7" x 9'0"
Calculated Area: 90 sq. ft
Included: Yes

Heated: Yes
Finished: Yes
Enclosed: Yes
Contiguous: Yes
Permitted: Yes
Wet space: No
Addition: No
Conversion: No

176 Filbey Court, Estes Park, Larimer County, Colorado, United States, 80517

9 Floor 1 - Bath



Max Dimensions: 9'0" x 5'11"
Calculated Area: 50 sq. ft
Included: Yes

Heated: Yes
Finished: Yes
Enclosed: Yes
Contiguous: Yes
Permitted: Yes
Wet space: Yes
Addition: No
Conversion: No